

WICONA

by  Hydro



© Panoptix GmbH

Aluminium solutions for façades,
windows, doors and sliding elements

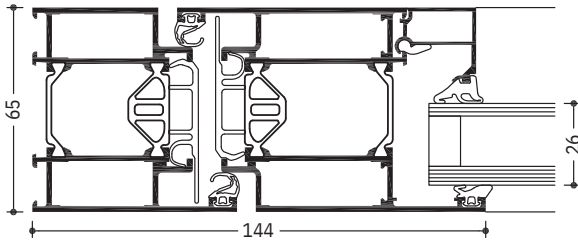
WICSTYLE 65 evo

» Hinged door

ALUMINIUM PROFILE SYSTEMS

» WICSTYLE 65 evo Hinged door

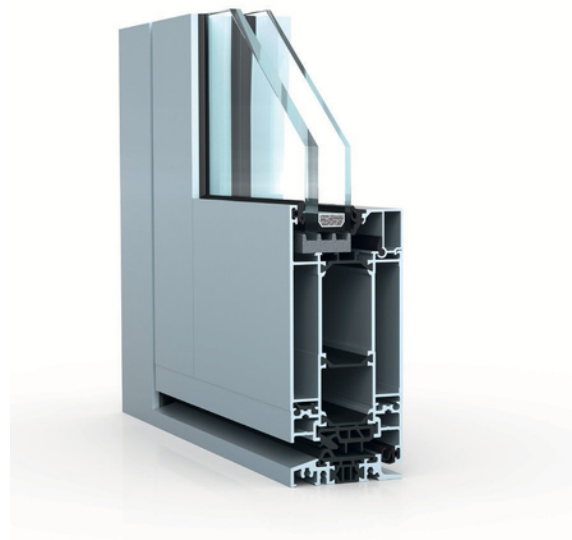
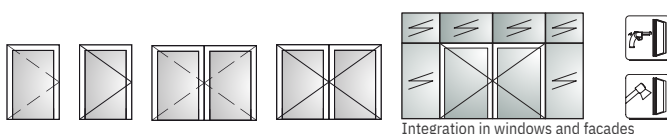
WICSTYLE 65 evo with its flush leaf design in 65 mm system depth and a comprehensive application range is perfectly qualified for the highest demands in design, technological quality and performance. Due to its favourable price/performance ratio it constitutes an economical aluminium door solution for almost any requirement.



System test results / CE product pass in accordance with EN 14351-1:2006+A2:2016

| | |
|--|---------------------------------|
| Air permeability:Up to class 4 | |
| Water tightness:Up to 7A | |
| Resistance to wind load: Class C2 | |
| Acoustic performance:R | W (C; Ctr) until 42 (-2; -5) dB |
| Operating forces:Class 2 | |
| Load bearing capacity of Fulfilled safety devices: | |
| Mechanical strength:Class 3 | |
| Repeated opening / closing: Up to class 8 (1 000 000 cycles) | |
| Impact resistance:Class 1 | |
| Behaviour between different climates: | Up to class 2(e) 2(d) |
| Burglar resistance:RC1N, RC2N, RC2, RC3 | |
| Bullet resistance:Up to FB4 NS | |
| Quality assurance:Certified according to ISO 9001:2008 | |
| Environmental management:Certified according to ISO 14001 | |

Specific application data see ift product pass



Technical performance:

Profile technology:

- High insulation multi-chamber system in symmetric design, quality assured thermal insulator connection
- For single and double leaf hinged doors
- For inward and outward opening
- For glass or panels with infill thickness from 3 mm to 50 mm
- Various threshold profiles with or without thermal break, also barrier free
- Fanlights, lateral glazings fixed or openable in combination with WICLINE evo window series

Thermal insulation:

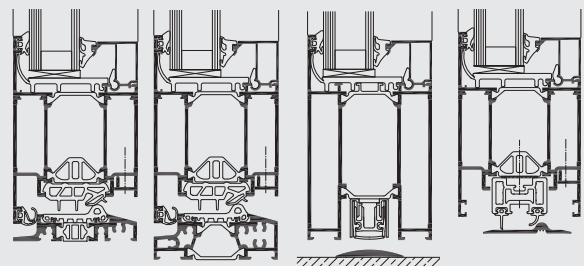
- f values: from 1.8 to 2.1 W/(m²K)
- U values: until 1.3 W/(m²K)

Hardware:

- Butt hinge
- Screwed hinge
- Concealed hinge
- Leaf sizes (w x h): 1400 mm x 2520 mm
- Max. leaf weight: until 200 kg, for bullet resistance with additional hinges until 400 kg

Additional designs:

- Double action doors
- Integration frame for stick façades
- Burglar resistance in classes RC1 to RC3
- Bullet resistance in class FB4
- Leaf overlapping infill on one side or on both sides



WICSTYLE threshold options

Austria
5201 Seekirchen
☎ +43 6212 2000
✉ info@wicona.at

Benelux
3400 Landen
☎ +32 11 690316
✉ info@wicona.be
✉ info@wicona.nl

Croatia
10010 Zagreb
☎ +385 01 2048 217
✉ info@wicona.de

Czech Republic
619 00 Brno
☎ +420 602 745 407
✉ wicona@wicona.cz

Denmark
8240 Risskov
☎ +45 7020 2048
✉ wicona@wicona.dk

España
08195 Sant Cugat del Vallès
Barcelona
☎ +34 93 573 77 76
✉ wicona.es@wicona.com

Estonia / Latvia
75312 Rae vald Harjumaa
☎ +372 657 66 35
✉ info@wicona.ee

France
02200 Courmelles
☎ +33 3 23598200
✉ info@wicona.fr

Germany
89077 Ulm
☎ +49 731 3984-0
✉ info@wicona.de

Hungary
1031 Budapest
☎ +36 (1) 4533457
✉ info@wicona.hu

Ireland
Dublin D22 X286
☎ +353 1 4105766
✉ info@wicona.ie

Italia
20063 Cernusco sul Naviglio MI
☎ +39 02 924291
✉ info@wicona.it

Kosovo-Albania
Prishtina 10000, Kosovo
☎ +38 349 28 02 22
✉ info@wicona.de

Lithuania / Latvia
02244 Vilnius
☎ +370 5 2102587
✉ info@wicona.lt

Norway
2007 Kjeller
☎ +47 22 42 22 00
✉ wicona@wicona.no

Poland
93-428 Łódź
☎ +48 42 683 63 73
✉ wicona.pl@hydro.com

Romania
032332 Bucharest
☎ +40 724 743 070
✉ info@wicona.de

Serbia
11070 Beograd
☎ +381 11 312 18 35
✉ info@wicona.de

Slovakia
82105 Bratislava
☎ +421 918 725 098
✉ info@wicona.sk

Slovenia
2201 Zg. Kungota
☎ +386 2 620 99 70
✉ info@wicona.de

Sweden
574 81 Vetlanda
☎ +46 470 78 74 00
✉ wicona@wicona.se

Switzerland
5506 Mägenwil
☎ +41 62 887 41 41
✉ info@wicona.ch

United Kingdom
Tewkesbury, GL20 8SF
☎ +44 1684 853500
✉ info.wiconauk@wicona.com

China
Beijing 100005, P.R.C
☎ +86 10 6059 5686 ext. 805
✉ contact.wicona.international@wicona.com

Singapore
608831 Singapore
☎ +65 6513 2126
✉ contact.wicona.international@wicona.com

United Arab
Emirates Dubai
☎ +971 4 887 00 96
✉ contact.wicona.international@wicona.com

United States of America
☎ 1+(516) 519-4635
✉ info.na@wicona.com

Other countries
31037 Toulouse
☎ +33 5 61312626
✉ contact.wicona.international@wicona.com