

**WICONA**

by  Hydro



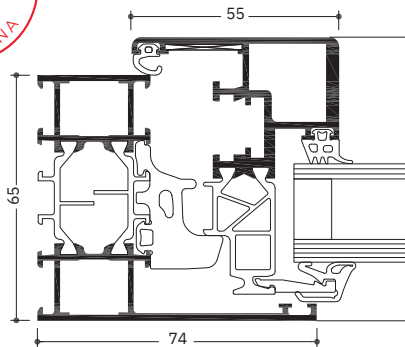
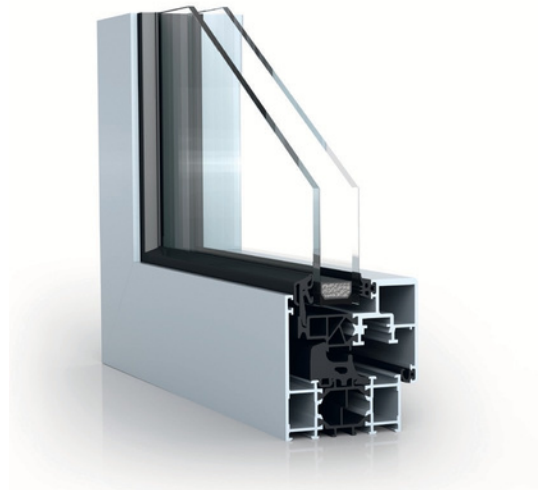
Aluminium solutions for façades,  
windows, doors and sliding elements

» WICLINE 65 evo / 75 evo  
» Concealed sash

ALUMINIUM PROFILE SYSTEMS

# » WICLINE 65 evo / 75 evo Concealed sash

The option “Concealed Sash” in the aluminium window system WICLINE evo features a special glazing bead fixed directly in the thermal break zone. As a result the system achieves an extremely slim frame elevation, superior thermal insulation values and a sleek profile design from outside. The improved ratio between frame and glazing surfaces leads to very good U values, increased light transmissions and panoramic views.



**System test results / CE product pass in accordance with EN 14351-1:2006+A2:2016**

Air permeability: Class 4	
Water tightness: E1200	
Resistance to wind load: Class C5 / B5	
Operating forces: Class 1	
Load bearing capacity of safety devices:	Fulfilled
Mechanical strength: Class 4	
Repeated opening / closing: Class 2 (10 000 cycles)	
Impact resistance: Class 3	
Corrosion resistance of the fittings:	Class 5
Burglar resistance:	RC1N, RC2N, RC2, RC3
Quality assurance:	Certified according to ISO 9001:2008
Environmental management:	Certified according to ISO 14001

**Technical performance:**

**Profile technology:**

High insulation multi-chamber system in symmetric design, quality assured thermal insulator connection  
 Patented corner and butt joint connection technology for high rigidity of frames and sashes  
 Infill thickness up to 42 mm

**Thermal insulation:**

U values: up to 1.5 W/(m²K)  
 U values: up to 0.94 W/(m²K) with triple glazing

**Gasket concept:**

- Central gasket in three variants:
  - Circumferential installation without corner pieces
  - With formed corners, no adhesive required
  - Corner vulcanised frames

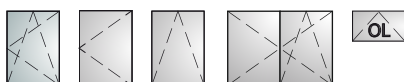
**Hardware:**

- Heavy duty system hardware with:
  - Visible hinges, powder coating or anodisation in all colours
  - Concealed hinges with integrated end position damping, opening angle max. 105°
- Sash weight:
  - up to 130 kg
- Sash sizes (w x h): 1400 mm x 2250 mm
- Optional opening limiter

**Additional designs in concealed sash design:**

- Integration frame for stick façades
- Fanlight
- Burglar resistance (see system tests)

**Now also available with WICONA’s award-winning concealed handle for profiles 1010615, 1010616 and 1010632.**



Austria  
5201 Seekirchen  
☎ +43 6212 2000  
✉ info@wicona.at

Benelux  
3400 Landen  
☎ +32 11 690316  
✉ info@wicona.be  
✉ info@wicona.nl

Croatia  
10010 Zagreb  
☎ +385 01 2048 217  
✉ info@wicona.de

Czech Republic  
619 00 Brno  
☎ +420 602 745 407  
✉ wicona@wicona.cz

Denmark  
8240 Risskov  
☎ +45 7020 2048  
✉ wicona@wicona.dk

España  
08195 Sant Cugat del Vallès  
Barcelona  
☎ +34 93 573 77 76  
✉ wicona.es@wicona.com

Estonia / Latvia  
75312 Rae vald Harjumaa  
☎ +372 657 66 35  
✉ info@wicona.ee

France  
02200 Courmelles  
☎ +33 3 23598200  
✉ info@wicona.fr

Germany  
89077 Ulm  
☎ +49 731 3984-0  
✉ info@wicona.de

Hungary  
1031 Budapest  
☎ +36 (1) 4533457  
✉ info@wicona.hu

Ireland  
Dublin D22 X286  
☎ +353 1 4105766  
✉ info@wicona.ie

Italia  
20063 Cernusco sul Naviglio MI  
☎ +39 02 924291  
✉ info@wicona.it

Kosovo-Albania  
Prishtina 10000, Kosovo  
☎ +38 349 28 02 22  
✉ info@wicona.de

Lithuania / Latvia  
02244 Vilnius  
☎ +370 5 2102587  
✉ info@wicona.lt

Norway  
2007 Kjeller  
☎ +47 22 42 22 00  
✉ wicona@wicona.no

Poland  
93-428 Łódź  
☎ +48 42 683 63 73  
✉ wicona.pl@hydro.com

Romania  
032332 Bucharest  
☎ +40 724 743 070  
✉ info@wicona.de

Serbia  
11070 Beograd  
☎ +381 11 312 18 35  
✉ info@wicona.de

Slovakia  
82105 Bratislava  
☎ +421 918 725 098  
✉ info@wicona.sk

Slovenia  
2201 Zg. Kungota  
☎ +386 2 620 99 70  
✉ info@wicona.de

Sweden  
574 81 Vetlanda  
☎ +46 470 78 74 00  
✉ wicona@wicona.se

Switzerland  
5506 Mägenwil  
☎ +41 62 887 41 41  
✉ info@wicona.ch

United Kingdom  
Tewkesbury, GL20 8SF  
☎ +44 1684 853500  
✉ info.wiconauk@wicona.com

China  
Beijing 100005, P.R.C  
☎ +86 10 6059 5686 ext. 805  
✉ contact.wicona.international@wicona.com

Singapore  
608831 Singapore  
☎ +65 6513 2126  
✉ contact.wicona.international@wicona.com

United Arab  
Emirates Dubai  
☎ +971 4 887 00 96  
✉ contact.wicona.international@wicona.com

United States of America  
☎ 1+(516) 519-4635  
✉ info.na@wicona.com

Other countries  
31037 Toulouse  
☎ +33 5 61312626  
✉ contact.wicona.international@wicona.com